

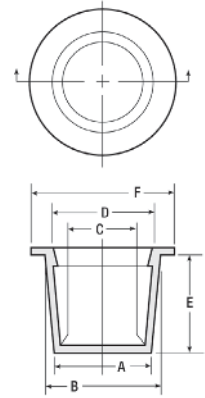
T Series Tapered Caps & Plugs



T Series caps tapered caps and plugs are designed to fit a wide range of applications and protect from contaminants and debris. The easily removable parts may be used for MIL Std, SAE-type, hydraulic, threaded or non-threaded fittings.

Material: Low-Density Polyethylene **Color:** Red
Applicable Specs: NAS 834

Note: Several parts are also stocked in green FlexTemp, a flexible thermoplastic rubber for extreme temperature applications ranging from -90°F to 300°F (-68°C to 149°C).



When PLUGGING
 "B" Dim. must be at least 1% larger than hole to be plugged. Minimum .020!"



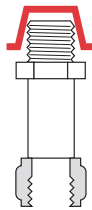
When CAPPING
 "C" Dim. must be at least 1% smaller than diameter to be capped. Minimum .020!"

Note:
 Part numbers shown in red text are also available in FlexTemp (thermoplastic rubber) Green.

Selection Charts - Caps

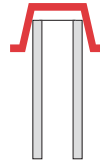
Recommended closures for tube and hydraulic fittings

| Caplugs No. | Fitting Size (Dash No.) | Tubing Diameter | To Fit Thread Size |
|-------------|-------------------------|-----------------|--------------------|
| T-2 | -2 | 1/8 | 5/16 - 24 |
| T-3X | -3 | 3/16 | 3/8 - 24 |
| T-4X | -4 | 1/4 | 7/16 - 20 |
| T-5 | -5 | 5/16 | 1/2 - 20 |
| T-6X | -6 | 3/8 | 9/16 - 18 |
| T-7 | - | 3/8 | 5/8 - 18 |
| T-9X | -8 | 1/2 | 3/4 - 16 |
| T-11X | -10 | 5/8 | 7/8 - 14 |
| T-13X | -12 | 3/4 | 1-1/16 - 12 |
| T-15X | -16 | 1 | 1-5/16 - 12 |
| T-18 | -20 | 1-1/4 | 1-5/8 - 12 |
| T-20 | -24 | 1-1/2 | 1-7/8 - 12 |
| T-230 | -28 | 1-3/4 | 2-1/4 - 12 |
| T-250 | -32 | 2 | 2-1/2 - 12 |



Recommended closures for unthreaded standard weight pipe (Schedule 40)

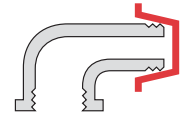
| Caplugs No. | Size |
|-------------|-------|
| T-4 | 1/8 |
| T-6X | 1/4 |
| T-8X | 3/8 |
| T-11 | 1/2 |
| T-13X | 3/4 |
| T-16 | 1 |
| T-18X | 1-1/4 |
| T-210 | 1-1/2 |
| T-240 | 2 |
| T-45A | 2-1/2 |
| T-1050 | 3 |
| T-1064 | 3-1/2 |
| T-1072 | 4 |
| T-1107 | 6 |
| T-1139 | 8 |



Recommended closures for threaded external NPT fittings

Based on average tapped hole fit. It is suggested that sample caps be tried for size before ordering in quantity.

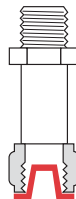
| Caplugs No. | Size |
|-------------|-------|
| T-4 | 1/8 |
| T-6 | 1/4 |
| T-8X | 3/8 |
| T-11 | 1/2 |
| T-13X | 3/4 |
| T-15X | 1 |
| T-18 | 1-1/4 |
| T-20 | 1-1/2 |
| T-240 | 2 |
| T-45A | 2-1/2 |
| T-96A | 3 |
| T-502 | 3-1/2 |
| T-1072 | 4 |
| T-1086 | 5 |
| T-1103 | 6 |



Selection Charts - Plugs

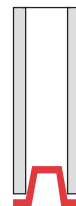
Recommended closures for tube and hydraulic fittings

| Caplugs No. | Fitting Size (Dash No.) | Tubing Diameter | To Fit Thread Size |
|-------------|-------------------------|-----------------|--------------------|
| T-1 | -2 | 1/8 | 5/16 - 24 |
| T-2 | -3 | 3/16 | 3/8 - 24 |
| T-3 | -4 | 1/4 | 7/16 - 20 |
| T-4 | -5 | 5/16 | 1/2 - 20 |
| T-5 | -6 | 3/8 | 9/16 - 18 |
| T-6 | - | 3/8 | 5/8 - 18 |
| T-8 | -8 | 1/2 | 3/4 - 16 |
| T-10 | -10 | 5/8 | 7/8 - 14 |
| T-12X | -12 | 3/4 | 1-1/16 - 12 |
| T-14X | -16 | 1 | 1-5/16 - 12 |
| T-17S | -20 | 1-1/4 | 1-5/8 - 12 |
| T-19 | -24 | 1-1/2 | 1-7/8 - 12 |
| T-221 | -28 | 1-3/4 | 2-1/4 - 12 |
| T-240 | -32 | 2 | 2-1/2 - 12 |



Recommended closures for unthreaded standard weight pipe (Schedule 40)

| Caplugs No. | Size |
|-------------|-------|
| T-1 | 1/8 |
| T-2X | 1/4 |
| T-5 | 3/8 |
| T-7 | 1/2 |
| T-10 | 3/4 |
| T-13 | 1 |
| T-16 | 1-1/4 |
| T-18 | 1-1/2 |
| T-220 | 2 |
| T-250 | 2-1/2 |
| T-53 | 3 |
| T-1050 | 3-1/2 |
| T-1064 | 4 |
| T-1080 | 5 |
| T-1097 | 6 |
| T-1128 | 8 |



Recommended closures for threaded internal NPT fittings

Based on average tapped hole fit. It is suggested that sample caps be tried for size before ordering in quantity.

| Caplugs No. | Size |
|-------------|-------|
| T-2X | 1/8 |
| T-4 | 1/4 |
| T-6X | 3/8 |
| T-9 | 1/2 |
| T-12X | 3/4 |
| T-14 | 1 |
| T-17S | 1-1/4 |
| T-20S | 1-1/2 |
| T-24S | 2 |
| T-44 | 2-1/2 |
| T-501 | 3 |
| T-502 | 3-1/2 |
| T-1070 | 4 |
| T-1086 | 5 |
| T-1103 | 6 |

